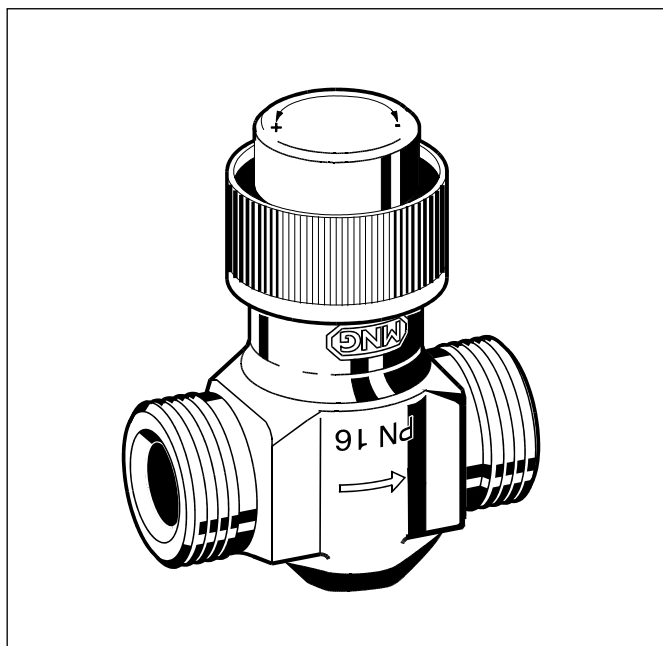


V9071 Two-way Valves

COOLING VALVES PN16, NC, FLAT SEALING

PRODUCT DATA



Design

- Valve housing PN16, DN15 with 1/2" external threads or DN20 with 3/4" external threads to DIN/ISO228, flat sealing
- Valve insert
- Protection cap

Materials

- Valve housing made of red bronze
- Insert made of brass with EPDM O-rings and stainless steel spindle
- Protection cap made of grey plastic

Identification

- MNG, PN16 and flow arrow on front of valve housing
- MNG, DN size and flow arrow on back of valve housing

Application

The V9071 two-way valves are used as control valves on the supply or return of small re-coolers and fan coil units in hydronic cooling systems.

The valves are equipped with flat sealing external threads on inlet and outlet. Suitable union nuts and tailpieces see 'Accessories' on page 2.

Features

- Robust, low noise valve housing made of corrosion-resistant red bronze
- High k_{vs} -values
- 6,5 mm stroke for floating control
- Variety of suitable Honeywell actuators available

Specifications

Medium	Water or water-glycol mixture (max. 50% glycol content)
pH-value	8...9,5
Operating temperature	2...130°C (36...266°F)
Operating pressure	max. 16 bar (232 psi)
Close-off pressure	max. 2,5 bar (36,3 psi)
k_{vs} (cv)-value	DN15: 1,0 (1,16) 1,6 (1,86) DN20: 2,5 (2,91)
Leakage rate	0,02% of k_{vs} -value
Rangeability	50 : 1
Starting position	NC = normally closed
Control characteristic	linear
Stroke	6,5 mm
Closing dimension	11,5 mm
Actuator connection	M30 x 1.5

Suitable Actuators

- Honeywell M4450/M8450 for on/off-control
- Honeywell M7410C1007 for floating control
- Honeywell M7410E1002 for modulating control

Function

The V9071 two-way valve in combination with an actuator controls the flow of water or coolant through a heat exchanger. The actuator acts onto the valve spindle and by this opens or closes the valve.

When the spindle is pressed down the valve is opened and the gap between valve cartridge and valve seat widens – the

flow of the medium into the heat exchanger increases. When the spindle returns the valve is closed and the flow of the medium is throttled or shut-off altogether except for a small leakage rate.

Dimensions

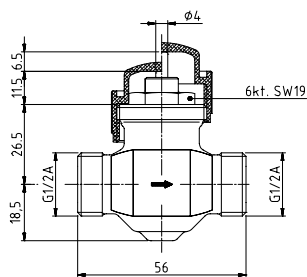


Fig. 1. Dimensions DN15

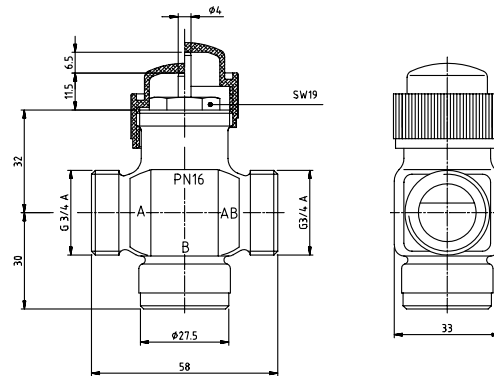


Fig. 2. Dimensions DN20

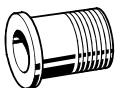
NOTE: All dimensions in mm unless otherwise stated.

Ordering Information

Order text	DN	Connection	kvs (cv)-value	OS-No.
V9071 two-way valve, NC, DN..., kvs...	15	G1/2"A	1,0 (1,16)	V9071X0015
	15	G1/2"A	1,6 (1,86)	V9071X1615
	20	G3/4"A	2,5 (2,91)	V9071X2520

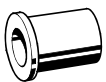
Accessories

Externally threaded brass tailpiece, flat sealing



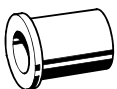
R3/8", for V9071 DN15	VA5900A010
R1/2", for V9071 DN20	VA5500A015
NPT1/2" (NPT thread), for V9071 DN20	VA5501A015

Brass soldering tailpiece, flat sealing



12 mm, for V9071 DN15	VA5930A012
15 mm, for V9071 DN20	VA5530A015
16 mm, for V9071 DN20	VA5530A016

Steel welding tailpiece, flat sealing



3/8", for V9071 DN15	VA5940A012
1/2", for V9071 DN20	VA5540A015

Brass union nut



for V9071 DN15	VA5004A012
for V9071 DN20	VA5000A015

PTFE sealing ring



for V9071 DN15	VA5090B010
for V9071 DN20	VA5090A015

Honeywell

Automation & Control Products

Honeywell AG
Zu den Ruhrwiesen 3
D-59755 Arnsberg-Neheim

Phone: (49) 2932 9880
Fax: (49) 2932 988224
mng@honeywell.com

<http://europe.hbc.honeywell.com>